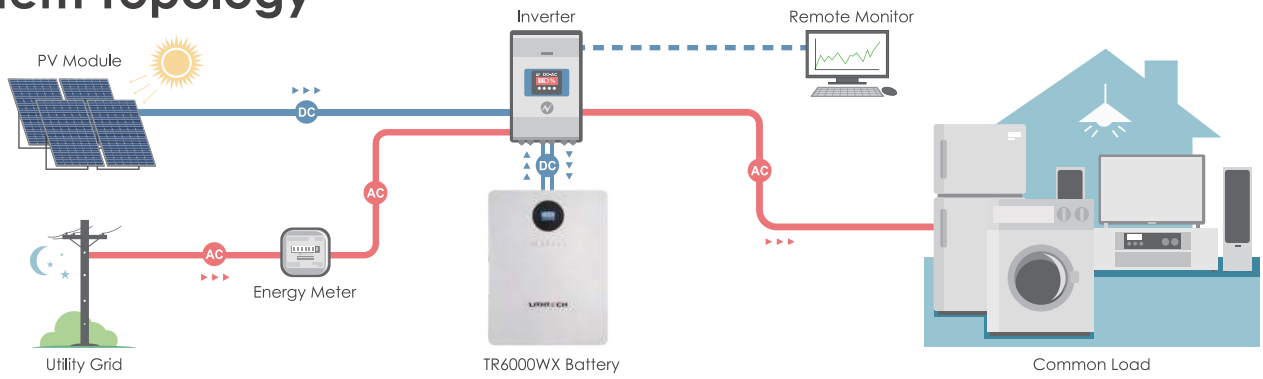


TR4000WX/TR6000WX/TR8000WX

Wall-Mounted Energy Storage



System Topology



Product-Highlights

Anti-Corrosion & UV Resistance

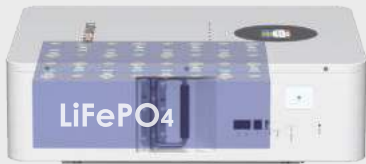


30% Thinner

167mm



8000* Cycles



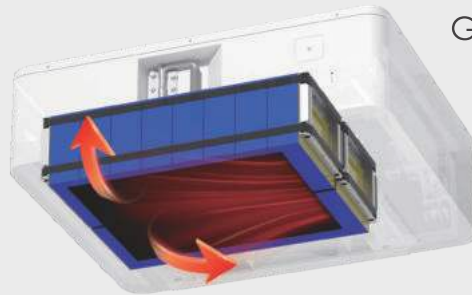
1C Fast Charging **



Intelligent BMS
Multi-Safety Protection



Graphene Technology
High Efficiency



Self-Heating Technology***
Work Under -20°C



Multi Functional
Touch Screen



Noise Level < 30dB
Quiet And Comfortable



* 8000 Cycles 60%SOH; **Only TR4000WX and TR6000WX support; ***Optional

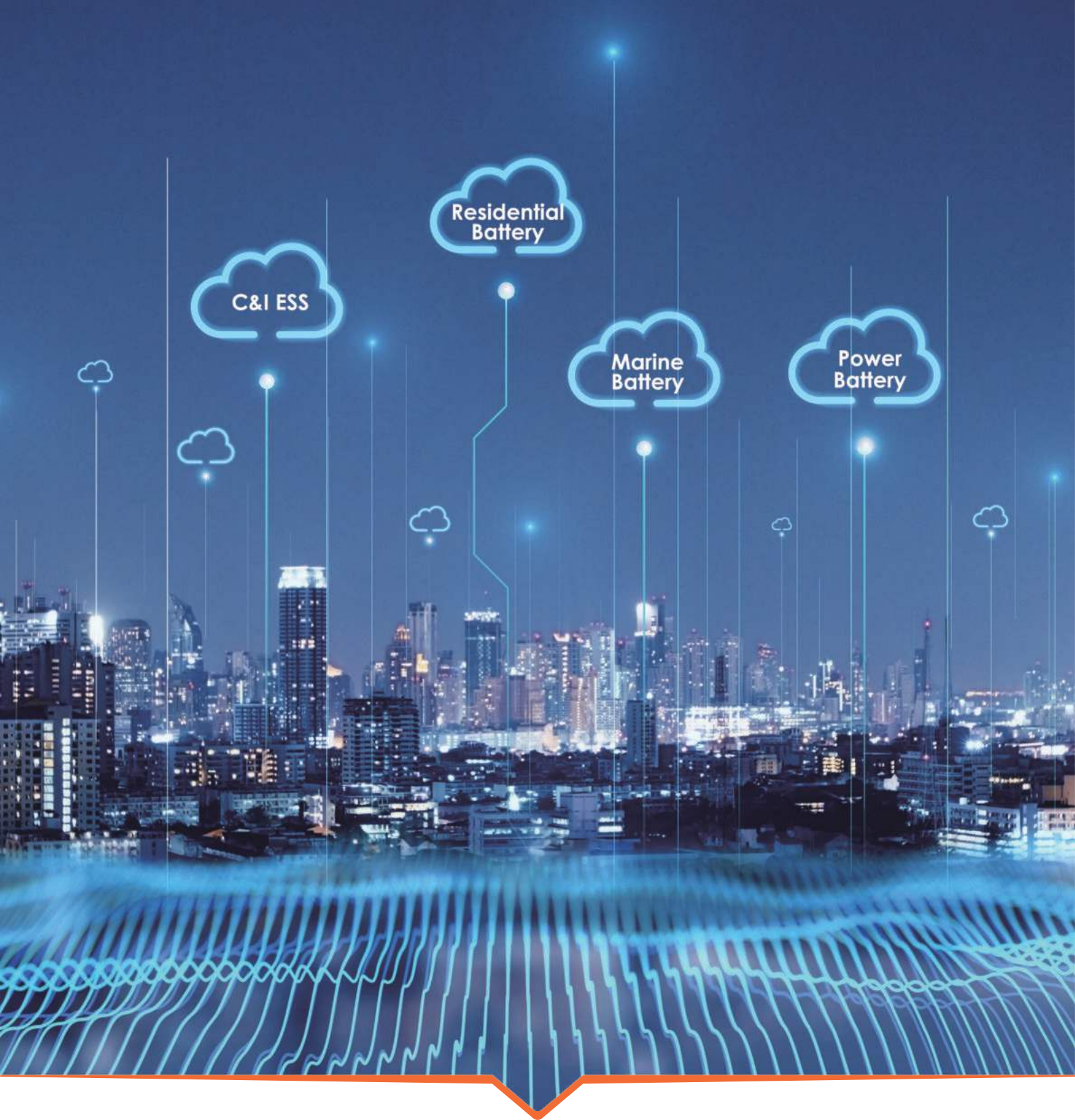
Product Introduction



Technical Parameter



Model	TR4000WX	TR6000WX	TR8000WX
Nominal Voltage	51.2V	51.2V	51.2V
Nominal Capacity	100Ah	200Ah	280Ah
Charge & Discharge Current	100A	100A	100A
Energy	5.12kWh	10.24kWh	14.336kWh
Chemistry	LiFePo4		
Cycle life	5000 Times 80% SOH (8000 Times 60% SOH)		
Rated Output Power	5kW	10kW	15kW
Certification	CE, UN38.3, ROHS, MSDS		
Communication	RS485, Ethernet, CAN		
WIFI/BT	Yes		
Self-Heating	Optional		
Waterproof	Splashproof		
Noise Level	< 30dB		
Charge Temperature	-0°C to 55°C		
Discharge Temperature	-20°C to 60°C		
Recommend Operating Temperature	15°C to 35°C		
Storage Temperature	0°C to 35°C		
Altitude	≤3000m		
Warranty	5 Years / 10 Years(Optional)		
Dimensions(L×W×H)	60×50×16.7cm	85×65×16.7cm	85×65×24.5cm
Weight	~53.5kg	~99.5kg	~132.5kg



Cleaner Energy, Simplified Life!

SHENZHEN LITTECH ENERGY CO.,LTD

Email: info@lith-tec.com

Add: 14th Floor, Block D, Central Avenue, Xixiang Street, Bao'an District, Shenzhen

©2024 by Shenzhen Littech Energy Co., Ltd. All rights reserved. Specifications and features are subject to change without prior notice. Brand names and logos are trademarks of their respective owners.

CONTACT US:

