

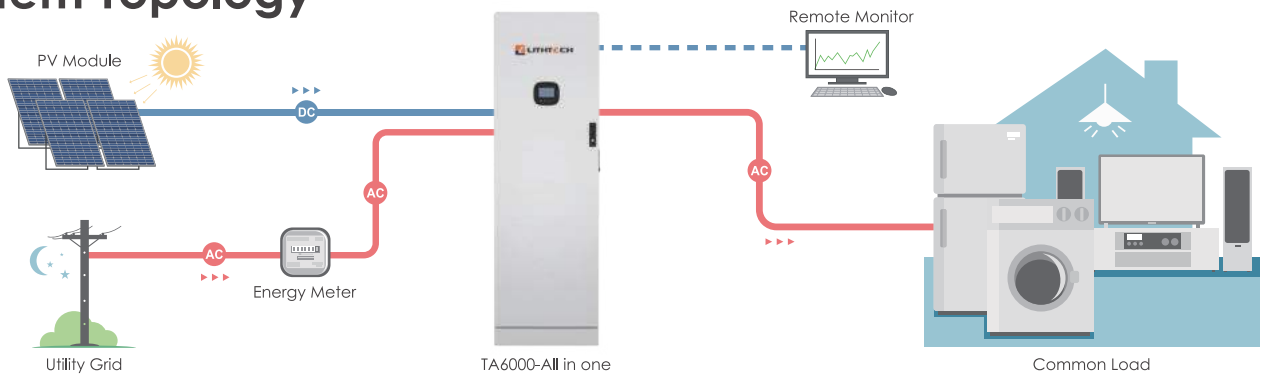
## TA6000-All in one

One-Stop Energy Storage System Solution

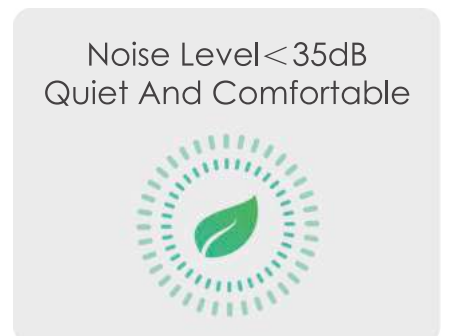
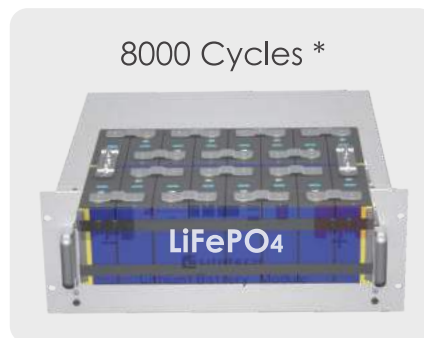
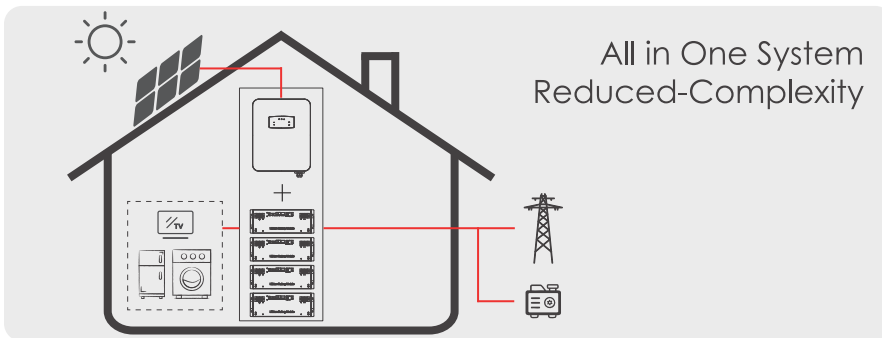




# System Topology

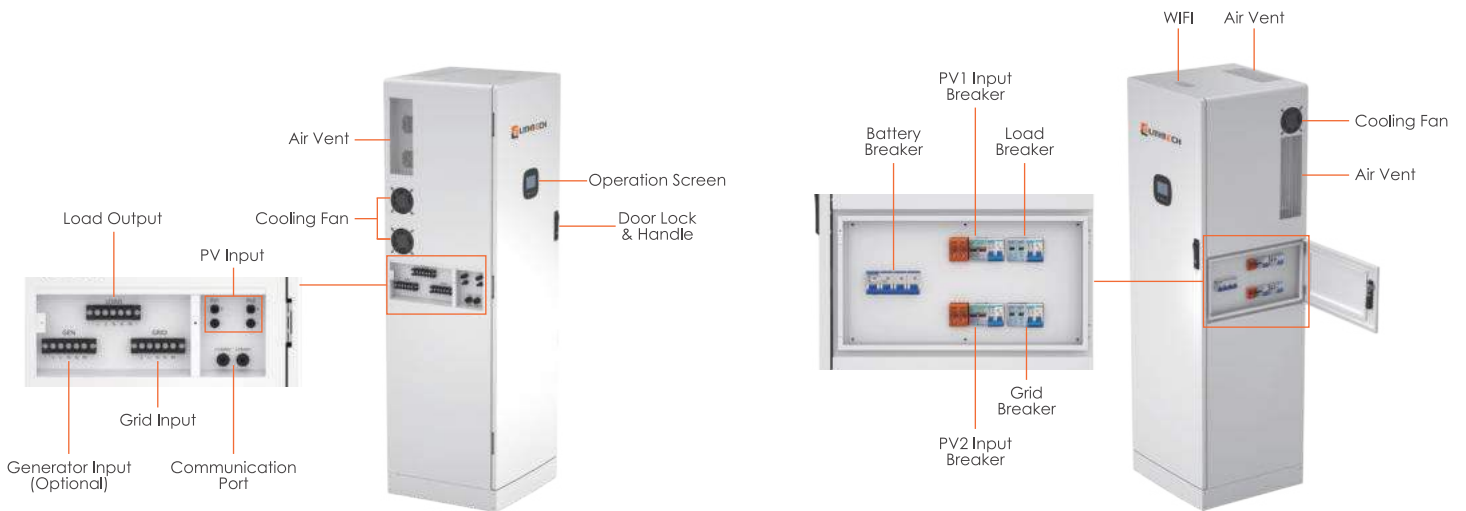


# Product-Highlights



\* 8000 Cycles 60% SOH

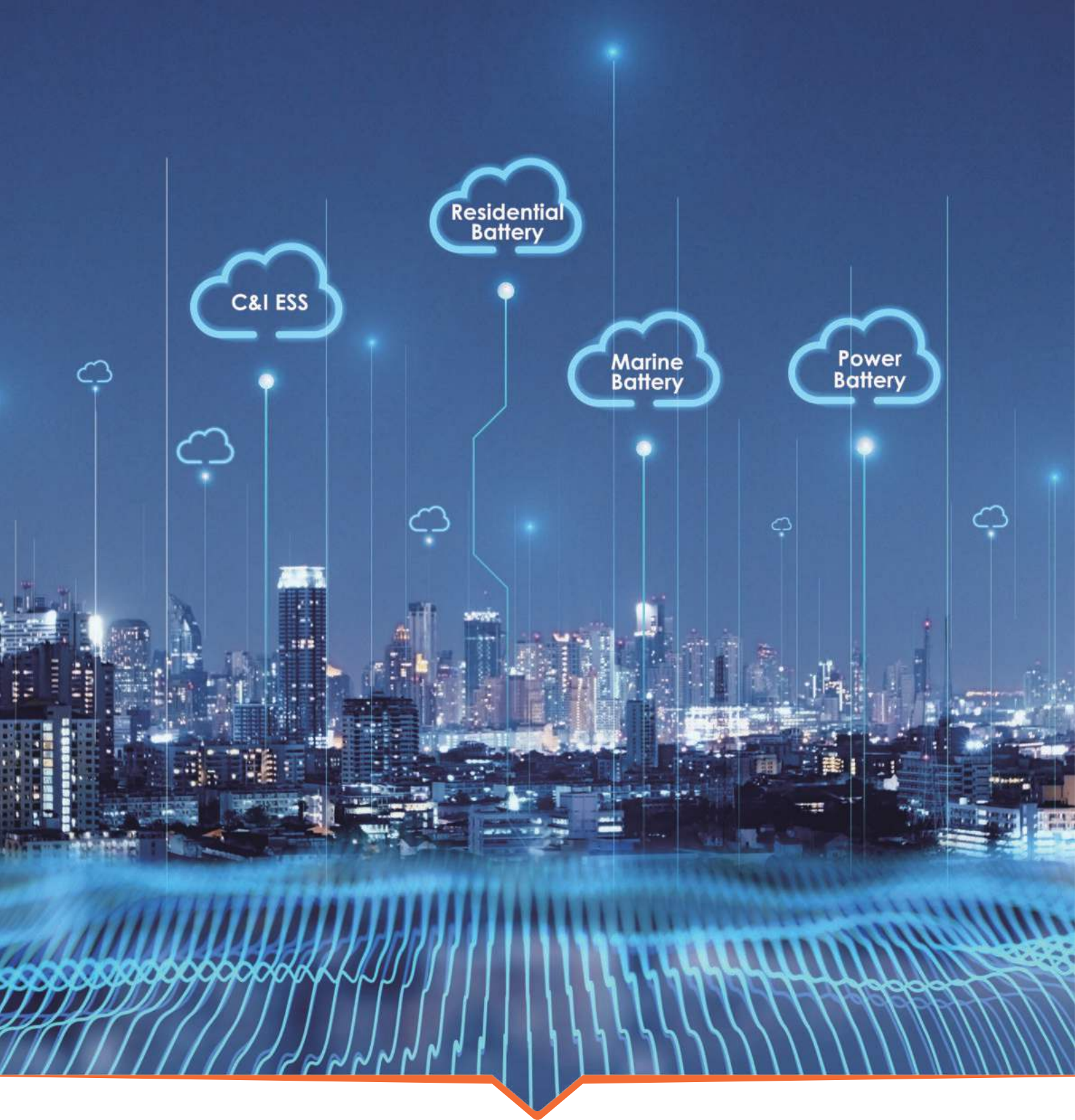
# Product Introduction



# Technical Parameter



Model	TA6000-M2	TA6000-M3	TA6000-M4
Nominal Voltage		51.2V	
Nominal Capacity	200Ah	300Ah	400Ah
Max Charge & Discharge Current	200A	300A	400A
Energy	10.24kWh	15.36kWh	20.48kWh
Chemistry		LiFePO <sub>4</sub>	
Cycle life	5000 times 80% SOH (8000 Cycles 60% SOH)		
Rated Output Power	8~10kW(Optional)	8~12kW(Optional)	8~12kW(Optional)
Rated Output Voltage	120V(US) / 230V(EU)		
PV Input Power	11kW	11~13.2kW	11~13.2kW
MPPT efficiency	99.9%		
Grid frequency range	50 Hz/60 Hz		
Certification	CE / UN38.3 / MSDS / UL9540(on going)		
Communication	RS485, Ethernet, CAN		
Operating Temperature	-20°C to 60°C		
Dimensions(L×W×H)	W590mm*D570mm*H1880mm		
Weight	~244kg	~286kg	~328kg



## Cleaner Energy, Simplified Life!

**SHENZHEN LITTECH ENERGY CO.,LTD**

**Email:** [info@lith-tec.com](mailto:info@lith-tec.com)

**Add:** 14th Floor, Block D, Central Avenue, Xixiang Street, Bao'an District, Shenzhen

©2024 by Shenzhen Littech Energy Co., Ltd. All rights reserved. Specifications and features are subject to change without prior notice. Brand names and logos are trademarks of their respective owners.

**CONTACT US:**

